

# Medium/High Voltage Cabinets

From 1 to 40 kV solutions for zone 1/2 and 21/22



# Medium/High Voltage Cabinet portfolio



With the series flexible design and certification, we are able support up to 40 kV in zone 1/2, 21/22 and 1250 A.

The range of Medium/High Voltage Cabinets are designed to meet the harshest environments and are ideal for any rugged High Voltage application where safety and flexibility is key.

## Examples of applications

- Top drive
- Motor/pump
- Subsea umbilical/downhole termination
- Topside Umbilical Termination Unit (TUTU) signal/power/hydraulics
- Umbilical fiber signal/power splitter

## Explosion protection

Standards	IEC 60079 – 0 / Equipment - General requirements IEC 60079 – 7 / Equipment protection by increased safety "e" IEC 60079 – 28 / Protection of equipment and transmission systems using optical radiation IEC 60079 – 31 / Equipment dust ignition protection by enclosure "t" IEC 60079 – 33 / Equipment protection by special protection "s"
Certification ATEX	CML 20ATEX3132X Presafe 15ATEX7059X Presafe 14ATEX5228X
Certification IECEx	IECEx CML 20.0085X IECEx PRE 16.0032X IECEx PRE 15.0054X
Certification CCC	2021122303114712
Other approvals and certificates, see <a href="http://www.bartec.com">www.bartec.com</a>	

## Technical data

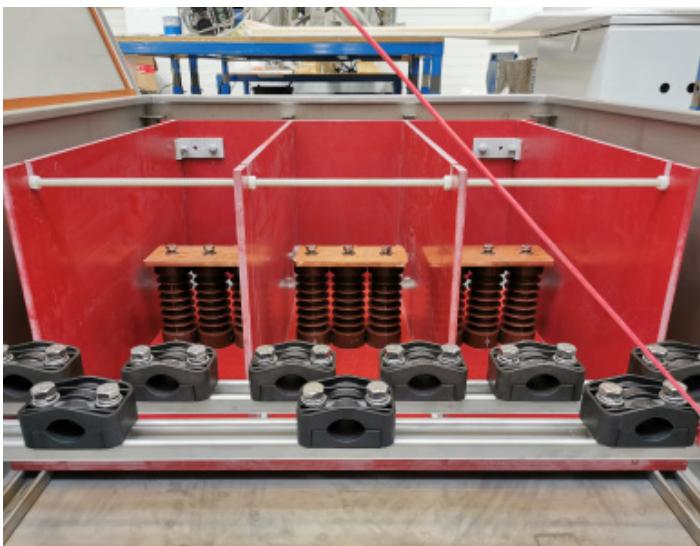
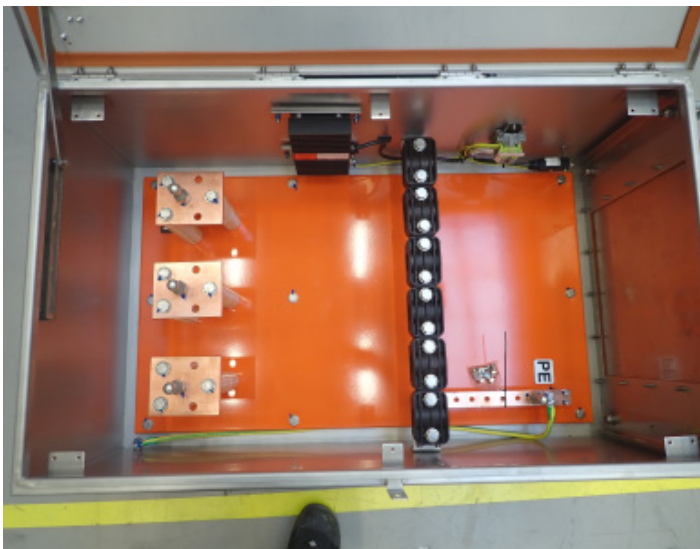
Material	Stainless steel 316L
Protection class	IP 66
Ambient temperature	-20 °C to +45 °C, optional -50 °C to +60 °C
Cover gaskets	Silicone
Surface treatment	Acidized pickling
Material thickness	min. 2 mm (depending on the box size)
Earthing	Internal earth bar/bracket
Optional	- Drain plug - Gland plate - Ground ball studs (to be mounted on the bus bars) - Space heaters - Thermostats - IR Inspection windows (only ATEX) - Fiber Optic Splice cassette(s) - Lifting lugs - Wet paint, externally and/or internally - Powder paint, externally and/or internally - Sensors, wireless or with cable, for detection of temperature, humidity, vibrations etc



## Product overview

Version	ITEM	Protection/ marking	Zone	Maximum voltage (kV)	Maximum current (A)	Connection mm <sup>2</sup>	Dimension power section (cm) W x H x D	Dimension fiber section (cm) W x H x D	Weight (kg)
High voltage JB	579530	Ex e	1 and 2	≤ 3,9 kV	≤ 250 A	bus bar	57 x 95 x 30		65 kg
High voltage JB	579530	Ex e	1 and 2	≤ 6,9 kV	≤ 250 A	bus bar	57 x 95 x 30		65 kg
High voltage JB	579540	Ex e	1 and 2	≤ 8 kV	≤ 250 A	bus bar	57 x 95 x 40		75 kg
High voltage JB	8011040	Ex e	1 and 2	≤ 11 kV	≤ 1000 A	bus bar	80 x 110 x 40		95 kg
High voltage JB	9012540	Ex nA	2	≤ 15 kV	≤ 600/1000 A	bus bar	90 x 125 x 40		105 kg
High voltage JB	10015050	Ex sb Ex sb/sc / Ex tb/tc [op is] op pr	1 and 2	≤ 40 kV	≤ 1250 A	bus bar	100 x 150 x 50		180 kg
High voltage JB/ Signal Splitter JB	11511038	Ex e (op is/pr)	1 and 2	≤ 11 kV /15 kV	≤ 1000 A	bus bar	80 x 110 x 38	35x110x38	75 kg
High voltage JB/ Signal Splitter JB	12512540	Ex e (op is/pr)	1 and 2	≤ 11 kV /15 kV	≤ 1000 A	bus bar	90 x 125 x 40	35x125x40	90 kg
High voltage JB/ Signal Splitter JB		Ex p	1 and 2		To application			For gassing umbilical	

\* Alternative dimensions, voltage and ampere ratings available on request.



## **BARTEC**

BARTEC TECHNOR AS  
Vestre Svanholmen 24  
4313 Sandnes  
Norway

Tel.: +47 51 84 41 00  
sales@bartec-technor.no

**bartec-technor.no**