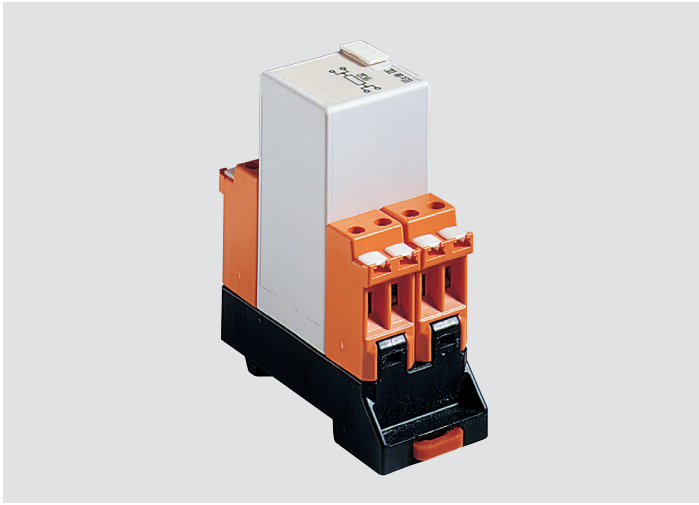


Miniature switching relay



The relay modules of the MODEX series offer most up-to-date switching configurations. A suppressor diode on the coil protects the power circuit from peak voltages. High shock and vibration resistance is just as important as the IP 66 protection of the contacts.

The MODEX relay switches circuits up to 5 A and is used as an isolator between low-current control circuits and high-current switching circuits.

Explosion protection

Ex protection type	Ⓜ II 2 G / I M2 Ex db e IIC Gb Ex db e I Mb Class I Zone 1 IIC A/Ex d e IIC Gb
Certification	PTB 97 ATEX 1068 U IECEx PTB 11.0083U Other approvals and certificates, see www.bartec.com

Technical data

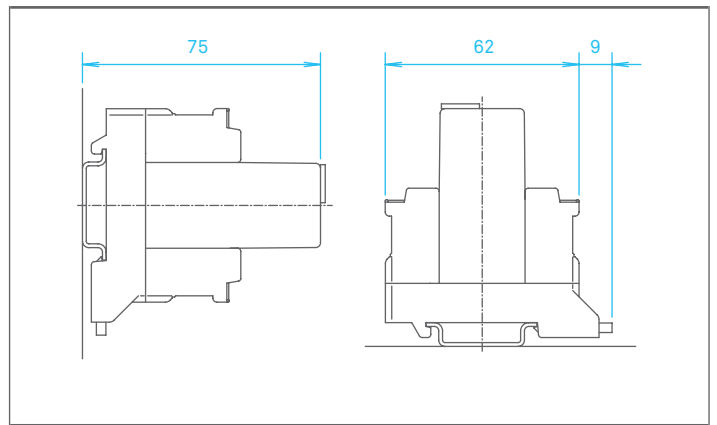
Enclosure material	High-quality thermoplastic
Protection class	Module IP 66/IEC 60529 Terminals IP 20/IEC 60529
Terminals	2.5 mm ² , fine stranded
Mounting rail	TS 35 x 7.5 (15) EN 60715
Labelling	written marking labels
Ambient temperature	-20 °C to +40 °C
Storage temperature	-40 °C to +70 °C
Weight	0.250 kg

Electrical data

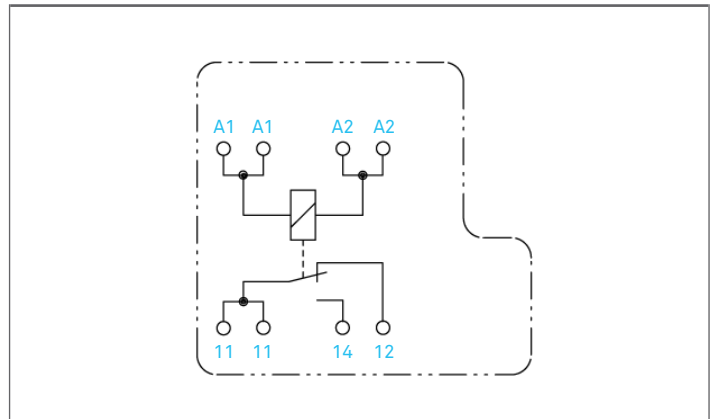
Coil data	AC/DC 11.2 V to 16 V/0.53 VA/0.37 W AC/DC 21.5 V to 28 V/0.43 VA/0.33 W AC/DC 42 V to 60.5 V/0.53 VA/0.4 W AC 96 V to 144 V; 50/60 Hz/0.85 VA AC 176 V to 264 V; 50 Hz/1.5 VA
Contact material	AgCdO
Max. switching voltage	AC 250 V/DC 300 V
Max. switching capacity	(ohmic load) 1 250 VA (50 W)
Test voltage	Coil-contact 4 kV
Mechanical life	min. 3 x 10 ⁶ switching cycles
Electrical life	> 1 x 10 ⁶ switching cycles/ AC 220 V, 5 A ohmic load
Operating frequency	7200 switching cycles/h
Guidelines	Directive 2014/34/EU Directive 2014/30/EU

Dimensions/mounting positions

Module width: 30 mm



Wiring diagram/terminal assignment



Selection chart

A	Code no.	Voltage
2	-	AC/DC 11.2 V to 16 V
3	-	AC/DC 21.5 V to 28 V
4	-	AC/DC 42 V to 60.5 V
7	-	AC 96 V to 144 V
8	-	AC 176 V to 264 V

Please insert correct code.

0 7 - 7 3 1 1 - 6 3 7 1 / * 0 0 0
A